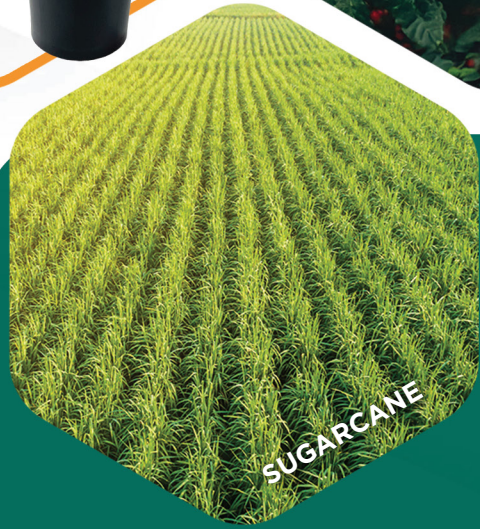
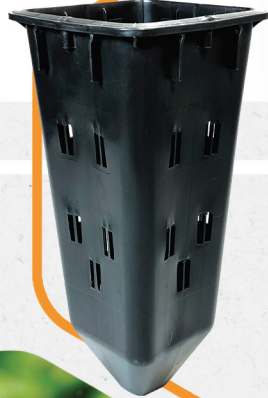


# JKS AGRO

V02/2025



**The largest company  
of rigid plastic trays  
in Latin America.**

# ECO line

Economy, durability and sustainability



## Tray ECO 200/11 ML



|  |                       |
|--|-----------------------|
|  | 200 (20 x 10)         |
|  | 1398 / m <sup>2</sup> |
|  | 530 x 270 mm          |
|  | 25,5 mm               |
|  | Pile/Stack            |
|  | 0,67 kg               |



## Tray ECO 128/18 OR 22 ML



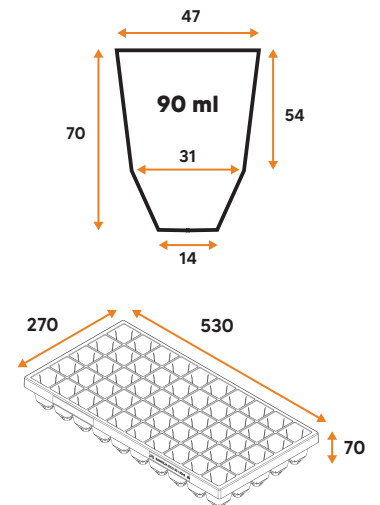
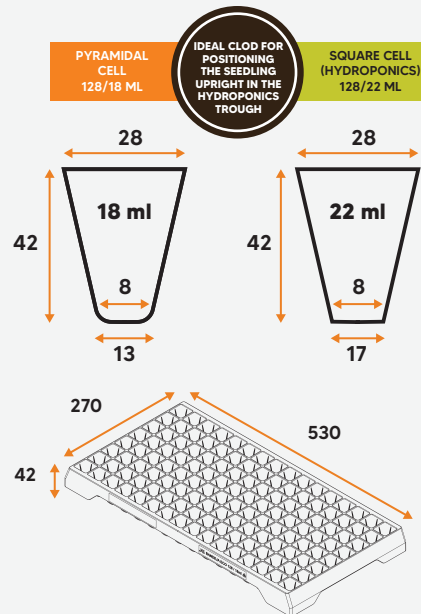
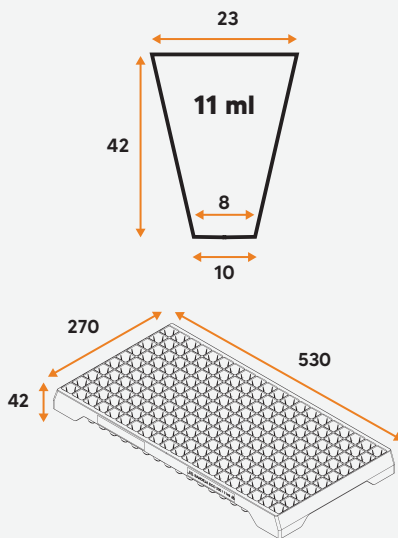
|  |                      |
|--|----------------------|
|  | 128 (16 x 8)         |
|  | 894 / m <sup>2</sup> |
|  | 530 x 270 mm         |
|  | 31,75 mm             |
|  | Pile/Stack           |
|  | 0,59 / 0,64 kg       |



## Tray ECO 50/90 ML



|  |                      |
|--|----------------------|
|  | 50 (10 x 5)          |
|  | 349 / m <sup>2</sup> |
|  | 530 x 270 mm         |
|  | 51,25 mm             |
|  | Fit (Nest)           |
|  | 0,60 kg              |



### CHARACTERISTICS

- There is no need to adapt, since the Eco tray has the same dimensions as the disposable tray;
- One-piece, rigid tray: facilitates transportation without losing seedlings;
- Facilitates transplanting seedlings from the tray to the bed;
- Rounded corners that prevent tears in the mulch;
- Pyramidal-shaped cells with smooth walls that make it easier to remove the removal of the seedlings;
- Optimum root architecture due to the four guides that direct the roots to the bottom of the cell;
- Easy to clean and disinfect;
- The trays can be reused countless times without generating waste;
- Washing the Eco tray does not represent 10% of the cost of the disposable tray.

### CHARACTERISTICS

- Tray for sugar cane seedlings from mini sprouts, chip or tiller;
- Quadrangular shape with 8 guides directing the roots to the bottom and the bottom of the cell and prevent tangling;
- Bottom of the cells with 5 holes, which prevent waterlogging and aeration of the root ball;
- Adequate clod volume, 90 ml, provides a vigorous root system;
- Tray in a rigid monoblock structure, ideal for mechanized transplanting.

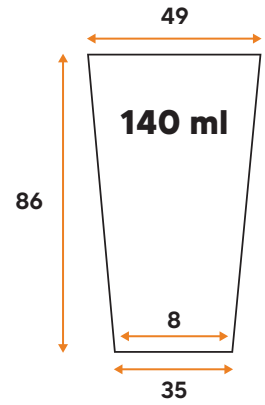


Tray  
**77/140 ML**

Ideal for sugar cane seedlings and ornamental grass



|  |                      |
|--|----------------------|
|  | 77 (11 x 7)          |
|  | 334 / m <sup>2</sup> |
|  | 586 x 393 mm         |
|  | 50,3 mm              |
|  | Fit (Nest)           |
|  | 1,63 kg              |



### CHARACTERISTICS

- Monobloc tray for producing pre-sprouted sugar cane seedlings (MPB), ideal for mini grinding wheels and chips;
- Adequate densification between seedlings, which promotes fast growth and leaf development;
- The spacing between seedlings facilitates cultivation such as irrigation, fertigation, etc;
- The rigid monobloc tray guarantees full automation in the transplantation of cane seedlings for the field, reducing labor and costs to the producer;
- Material - 100% recyclable.

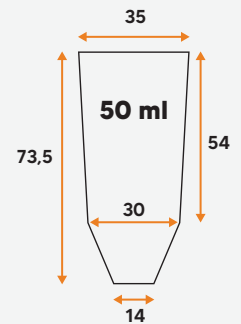


Tray  
**162/50 ML**

Indicated for the production of seedlings of: sugarcane, fruit trees and large plants



|  |                      |
|--|----------------------|
|  | 162 (18 x 9)         |
|  | 717 / m <sup>2</sup> |
|  | 670 x 337 mm         |
|  | 37 mm                |
|  | Pile/Stack           |
|  | 1,87 kg              |



### CHARACTERISTICS

- Ideal for the production of plants from explant, profile "Chip/Bud (MPB)";
- Optimal densification of plants, which promotes rapid growth and leaf development;
- Cylindrical cells, with root guides;
- Ensures good management and automation in the transplant of plants for the field;
- Allows work with grafting, staking and micro-seedlings, propagated;
- Made of 100% recyclable polypropylene.

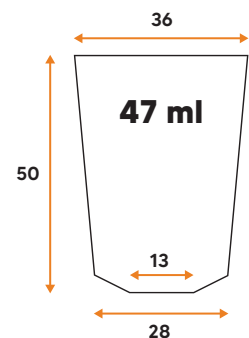


Tray  
**162/47 ML**

Indicated for the production of sugar cane seedlings, the production of vegetables in the hydroponic system and for the production of vegetables in the "large seedling" system



|  |                      |
|--|----------------------|
|  | 162 (18 x 9)         |
|  | 717 / m <sup>2</sup> |
|  | 670 x 337 mm         |
|  | 37 mm                |
|  | Pile/Stack           |
|  | 1,47 kg              |



### CHARACTERISTICS

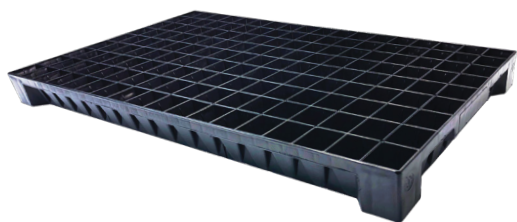
- Suitable densification for sugar cane;
- Eliminates the initial phase for vegetables;
- Considerable gain in training time;
- Greater spacing between seedlings;
- Reduction in blind seedlings.



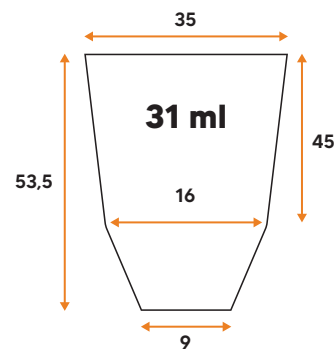
Tray

**162/31 ML**

Indicated for the production of vegetable and vegetable seedlings



|  |                      |
|--|----------------------|
|  | 162 (18 x 9)         |
|  | 717 / m <sup>2</sup> |
|  | 669 x 337 mm         |
|  | 37 mm                |
|  | Pile/Stack           |
|  | 1,33 kg              |



## CHARACTERISTICS

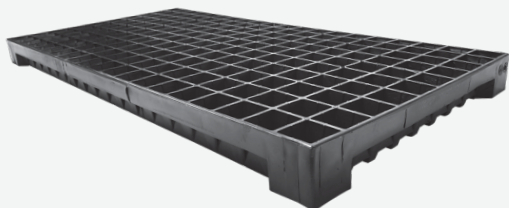
- Trapezoidal format cells with root guides;
- The tray (tray) 162/31 JKS, compared to the tray 128 cells, provides 27% more plants per m<sup>2</sup>, with the same substrate volume;
- Stimulates the uniform growth of seedlings;
- Allows work with grafts, staking and micro-seedlings propagated;
- Material - 100% recyclable.



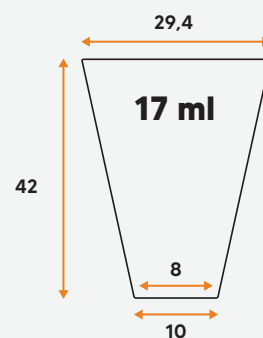
Tray

**200/17 ML**

Indicated for the production of vegetable and vegetable seedlings



|  |                      |
|--|----------------------|
|  | 200 (20 x 10)        |
|  | 900 / m <sup>2</sup> |
|  | 664 x 334 mm         |
|  | 33 mm                |
|  | Pile/Stack           |
|  | 1,16 kg              |
|  | Black or White       |



## CHARACTERISTICS

- Trapezoidal format cells with root guides;
- Allows uniform growth of plants;
- Allows excellent root development and adequate relationship between root and aerial part;
- Material - 100% recyclable.



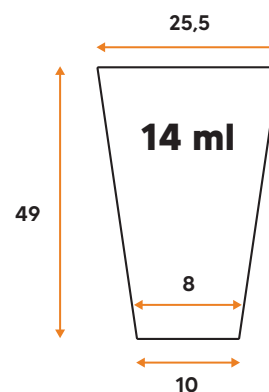
Tray

**200/14 ML**

First floating plastic tray from the Brazilian market Indicated for the production of tobacco plants in the Floating system



|  |                      |
|--|----------------------|
|  | 200 (20 x 10)        |
|  | 902 / m <sup>2</sup> |
|  | 664 x 334 mm         |
|  | C 32,5 mm   L 32 mm  |
|  | Pile/Stack           |
|  | 1,3 kg               |



The only solution in accordance with the **ethical conduct and compliance of the tobacco industry**

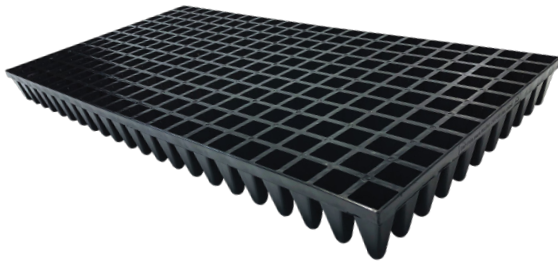
## CHARACTERISTICS

- Greater phytosanitary control;
- Better development of the root system and aerial part (leaves);
- Great progress in the environmental aspect;
- It can be used in the production of vegetable seedlings and vegetables;
- Material - 100% recyclable.

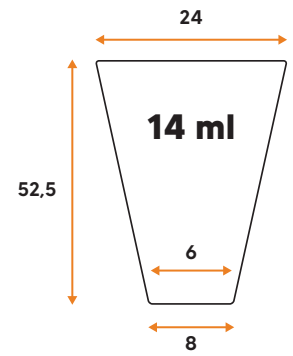


Tray  
**242/14 ML**

First floating plastic tray from the Brazilian market Indicated for the production of tobacco plants in the Floating system



|  |                        |
|--|------------------------|
|  | 242 (22 x 11)          |
|  | 1,116 / m <sup>2</sup> |
|  | 659 x 329 mm           |
|  | 30 mm                  |
|  | Fit (Nest)             |
|  | 1,07 kg                |



### CHARACTERISTICS

- Greater phytosanitary control;
- Better development of the root system and aerial part (leaves);
- Great progress in the environmental aspect;
- It can be used in the production of vegetable seedlings and vegetables;
- Material - 100% recyclable.

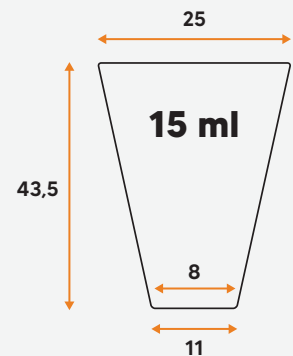


Tray  
**288/15 ML**

Indicated for the production of tobacco plants in the Semi Floating system



|  |                        |
|--|------------------------|
|  | 288 (24 x 12)          |
|  | 1,289 / m <sup>2</sup> |
|  | 668 x 336 mm           |
|  | 27,65 mm               |
|  | Pile/Stack             |
|  | 1,29 kg                |



### CHARACTERISTICS

- Trapezoidal format cells with root guides;
- For production of plants that need more substrate volume;
- Allows uniform growth of plants;
- Made of 100% recyclable polypropylene.

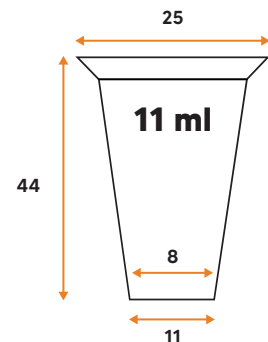


Tray  
**288/11 ML**

Indicated for the production of vegetable and vegetable seedlings



|  |                        |
|--|------------------------|
|  | 288 (24 x 12)          |
|  | 1,289 / m <sup>2</sup> |
|  | 666 x 334 mm           |
|  | 27,7 mm                |
|  | Pile/Stack             |
|  | 1,23 kg                |



### CHARACTERISTICS

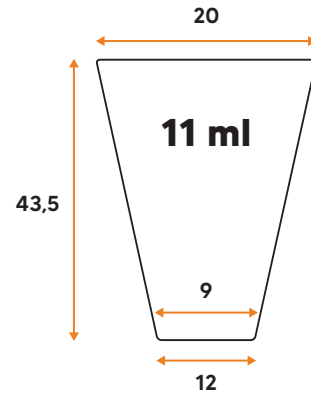
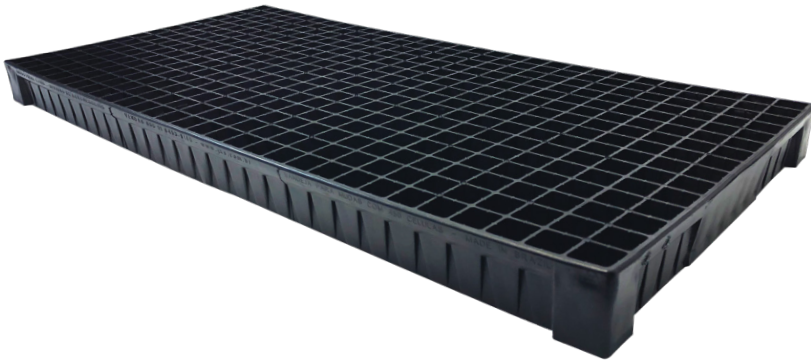
- Trapezoidal format cells with root guides;
- For plant production with more savings of substrate;
- Stimulates the uniform growth of plants;
- Material - 100% recyclable.



Tray

**450/11 ML**

Indicated for the production of creeping tomato seedlings



## CHARACTERISTICS

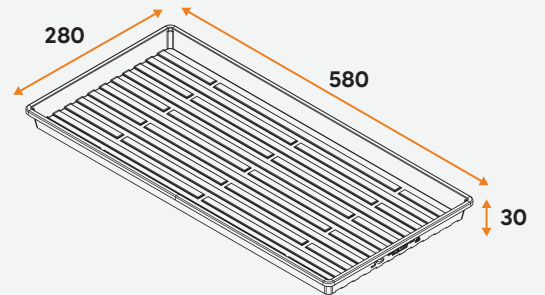
- Best cost benefit in number of plants per m<sup>2</sup>;
- Trapezoidal format cells with root guides;
- Allows great productivity in nurseries;
- Material - 100% recyclable.

|  |                        |
|--|------------------------|
|  | 450 (30 x 15)          |
|  | 2.032 / m <sup>2</sup> |
|  | 667 x 334 mm           |
|  | C 22mm   L 21,8 mm     |
|  | Pile/Stack             |
|  | 1,67 kg                |



Tray

**Microverdes** WITH AND WITHOUT HOLES



## CHARACTERISTICS

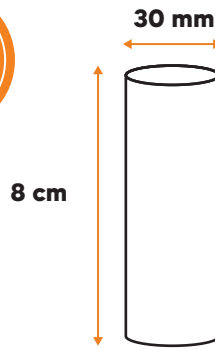
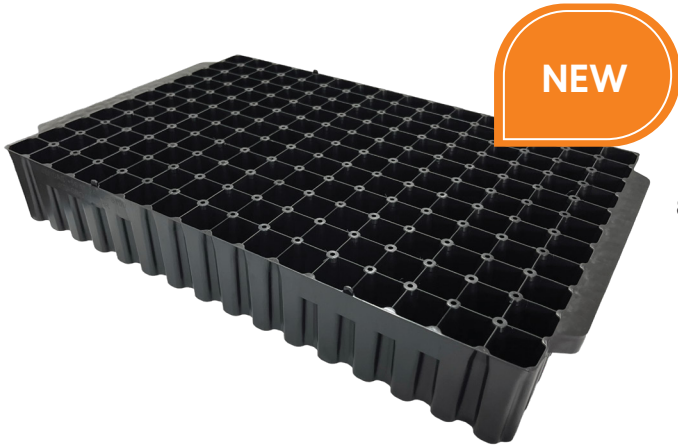
- First rigid plastic tray intended for growing microgreens from Brazil;
- Dimensions suitable for commercial or residential cultivation;
- Labyrinth-shaped channels that promote efficient capillary irrigation;
- It has rounded corners that facilitate the removal of the tangling of roots and substrate;
- Ideal height for harvesting microgreens;
- Material - 100% recyclable.

|  |                     |
|--|---------------------|
|  | 0,16 m <sup>2</sup> |
|  | 580 x 280 x 30 mm   |
|  | Fit (Nest)          |
|  | 0,32 kg             |
|  | Black or White      |



## Tray for Paper Pots 30 mm

**176** Recommended for the cultivation of eucalyptus, pine, and small trees



|  |   |
|--|---|
|  | 176 (16 x 11)                             |
|  | 485 / m <sup>2</sup>                      |
|  | 585 x 377,5 x 83 mm                       |
|  | 34,15 mm                                  |
|  | Pile/Stack                                |
|  | 1,85 kg without brim    1,97 kg with brim |

### CHARACTERISTICS

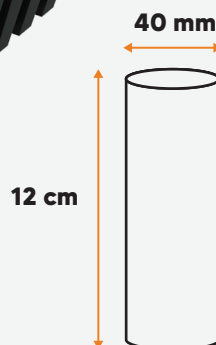
- The trays can be supported under countertops, rails, or wires;
- They have side flaps that allow support on angle brackets;
- Our paperpot trays are designed to induce air pruning of the roots, preventing root circling and stimulating root sprouting, resulting in an abundant and healthy root system;
- The integrated aeration system in the tray provides ideal conditions for seedling growth, and the cells are designed to guide root development correctly;

- The openings at the bottom and center of the cells facilitate mechanized removal, if the nursery uses such handling;
- Each cell has four angular ridges that ensure the paperpots are centered all the way to the bottom of the cell, whether handled manually or mechanically;
- The paperpot is easily removed from the tray, allowing for direct planting in the field as the paper used is biodegradable;
- Ideal for using the sustainable and biodegradable paperpot technology as a replacement for plastic bags and tubes;



## Tray for Paper Pots

**96** Recommended for the cultivation of conilon and arabica coffee seedlings, black pepper, fruit trees, and small native plants



|  |   |
|--|---|
|  | 96 (12 x 8)                             |
|  | 485 / m <sup>2</sup>                    |
|  | 595 x 371 x 120 mm                      |
|  | 46,1 mm                                 |
|  | Pile/Stack                              |
|  | 2,2 kg without brim    2,4 kg with brim |

### CHARACTERISTICS

- Cells designed to guide roots in the correct direction;
- Provides ideal conditions for seedling growth;
- Side cuts in the cells allow for manual removal of paperpots;
- Openings that facilitate mechanized removal;

- Induces air pruning of roots, preventing root circling;
- Stimulates sprouting, resulting in a healthy and abundant root system;
- Side flaps allow support on brackets, benches, grids, or wires;
- Also available in a flapless version.



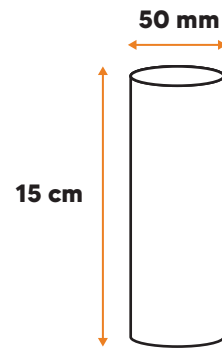
## Tray for Paper Pots

### 32N

Recommended for the cultivation of macaúba, oil palm, coffee, cocoa, native species, and seedlings that require a large volume of substrate



**NEW**



### CHARACTERISTICS

- Nest-type cells that facilitate transportation and reduce storage area;
- Helps reduce costs of washing, disinfection, and losses;
- Allows for better aeration, preventing root entanglement;
- Assists with reverse logistics issues;
- Contributes to the production of more vigorous seedlings.

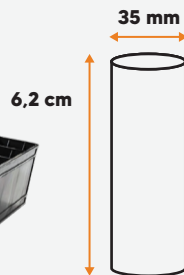
|  |                      |
|--|----------------------|
|  | 32 (8 x 4)           |
|  | 224 / m <sup>2</sup> |
|  | 533 x 267 x 155 mm   |
|  | 63,40 mm             |
|  | Fit (Nest)           |
|  | 1,51 kg              |



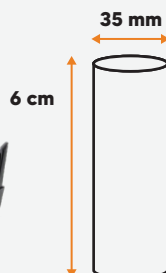
## Paper Pots

Indicated for the production of forest plants (eucalyptus and pine), native, fruit bearing, ornamental plants

### 126 R



### 126N



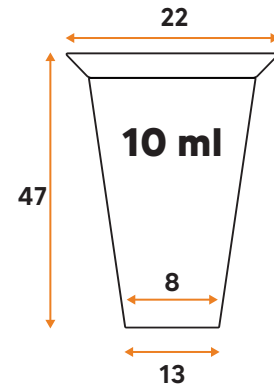
### CHARACTERISTICS

- Reduces transportation costs (reverse logistics), compared to conventional system (plastic tubes);
- Reduces washing, disinfection, breakage and loss costs, compared to the conventional system (plastic tubes);
- The paper pots are in contact with the tray through a small support surface, which improves aeration and encourages aerial pruning;
- The tray cells prevent root curling and, consequently, they allow the development of an excellent root architecture;
- Material - 100% recyclable.

|  | 126 R                | 126 N                |
|--|----------------------|----------------------|
|  | 126 (14 x 9)         | 126 (14 x 9)         |
|  | 578 / m <sup>2</sup> | 578 / m <sup>2</sup> |
|  | 580 x 375 x 67 mm    | 580 x 376 x 78 mm    |
|  | 41,1 mm              | 41,4 mm              |
|  | Pile/Stack           | Fit (Nest)           |
|  | 1,05 kg              | 1,34 kg              |



Tray  
**432/10 ML**



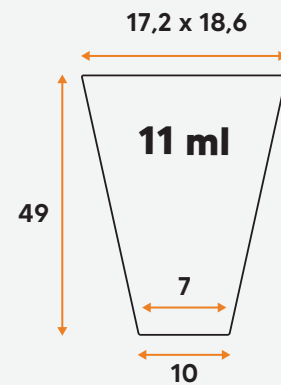
Indicated for the production of celery, lettuce, broccoli, pepper, cabbage, tomato seedlings industry. Tray used in the Chilean market in the production of vegetable seedlings.

|  |                        |
|--|------------------------|
|  | 432 (27 x 16)          |
|  | 1.845 / m <sup>2</sup> |
|  | 636 x 368 mm           |
|  | 22,8 mm                |
|  | Pile/Stack             |
|  | 1,75 kg                |



Tray  
**396/11 ML**

Indicated for the production of celery seedlings, tomato industry. Tray used in the North American and Mexican markets in the production of vegetable and vegetable seedlings



### CHARACTERISTICS

- The tray with the highest number of plants per m<sup>2</sup> on the market;
- Trapezoidal format cells with root guides;
- Excellent root development and adequate relationship roots/aerial part;
- Allows great productivity in nurseries;
- Material - 100% recyclable.

|  |                        |
|--|------------------------|
|  | 396 (33 x 12)          |
|  | 2.555 / m <sup>2</sup> |
|  | 674 x 230 mm           |
|  | C 20,3   L 18,9 mm     |
|  | Pile/Stack             |
|  | 1,36 kg                |



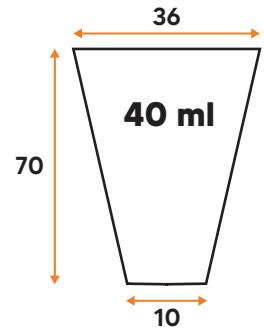
Tray

## 135/40 ML

Suitable for producing pumpkin, melon and watermelon seedlings



|  |                      |
|--|----------------------|
|  | 135 (15 x 9)         |
|  | 562 / m <sup>2</sup> |
|  | 636 x 378 mm         |
|  | 41,4 mm              |
|  | Pile/Stack           |
|  | 1,23 kg              |



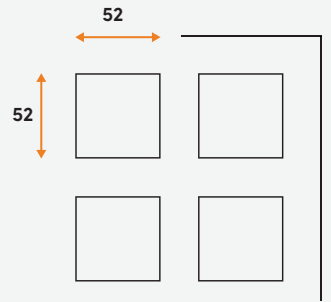
Tray

## Tube Holder 63

Indicated for tubes 180, 280 ml JKS and tubes with a diameter of up to 52 mm. For nurseries producing: coffee, forestry, fruit trees and ornamentals



|  |                      |
|--|----------------------|
|  | 63 (9 x 7)           |
|  | 238 / m <sup>2</sup> |
|  | 600 x 440 x 19,5 mm  |
|  | 63 mm                |
|  | Pile/Stack           |
|  | 1,03 kg              |



### CHARACTERISTICS

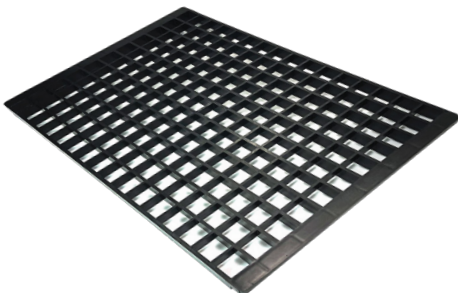
- Allows you to install 4 or 5 legs and use the tray tubes to support it to the floor;
- Better phytosanitary control, seedlings produced with substrate and suspended, without contact with the ground, avoid the contamination by fungi, bacteria, nematodes and weeds;
- Allows the practical handling of plants and tubes;
- Excellent mechanical resistance, with edges and rounded corners, prevent work accidents;
- Material - 100% recyclable.



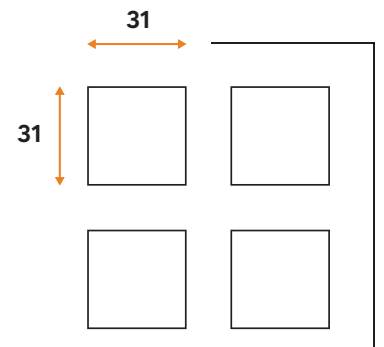
Tray

## Tube Holder 176

Indicated for tubes of 54 ml for nurseries producing eucalyptus, pine and citrus rootstock plants.



|  |                      |
|--|----------------------|
|  | 176 (16 x 11)        |
|  | 765 / m <sup>2</sup> |
|  | 585 x 390 x 30 mm    |
|  | 35 mm                |
|  | Pile/Stack           |
|  | 1,33 kg              |



### CHARACTERISTICS

- Excellent mechanical resistance;
- Allows practical handling of plants in tubes;
- Material - 100% recyclable.



## Multipot Flowerpot

### 3780 ML

Indicated for the production of large citrus, rubber tree, fruit and native or exotic plants.

**With legs:** for support on a flat surface, it allows sustained use.

**Without legs:** it must always be used upright.

MULTIPOT  
BACKGROUND



## CHARACTERISTICS

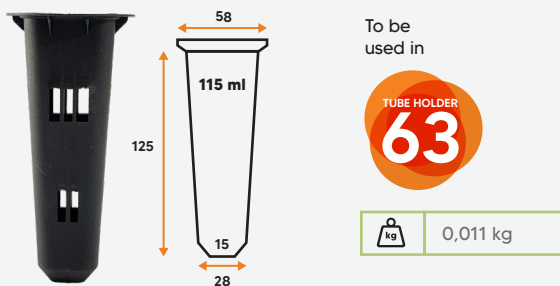
- Windows that induce aerial pruning of the roots, avoiding its rolling;
- Root guides that direct the roots to the bottom;
- Improved anchoring of transplanted plants in the field;
- Do not leave residues in the field, such as undesirable plastic bags;
- Material - 100% recyclable.



## Tubes

### 115/180 ML

Indicated for the production of coffee, forest, native, fruit and ornamental plants.



## CHARACTERISTICS

- Side windows and hollow bottom, improve drainage, aeration, stimulates aerial pruning of the roots with a system healthy root;
- Root guides direct the roots to the bottom, avoiding the curl;

- Better anchoring of transplanted plants in the field;
- Do not leave residues in the field, such as undesirable plastic bags;
- Material - 100% recyclable.



## Tubes

### 190/280 ML

Indicated for the production of coffee, forest, native, fruit and ornamental plants.



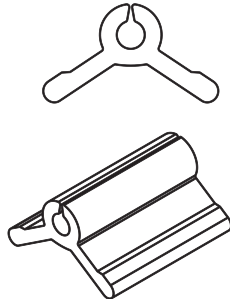
## CHARACTERISTICS

- Better phytosanitary control;
- No need to prune the roots;
- Uniform seedlings, reducing time and costs for the producer;
- Leaves no residue in the field.



## Flexible clip FOR GRAFTING

JKS Grafting Clips make the grafting operation more precise and efficient, adding even more value to the seedlings and bringing more profitability to the grower



| Cultivation        | Diameter | Color  |
|--------------------|----------|--------|
| Tomato/<br>peppers | 1.40 mm  | Clear  |
|                    | 1.60 mm  | Blue   |
|                    | 1.80 mm  | Pink   |
|                    | 2.00 mm  | Yellow |
|                    | 2.20 mm  | Orange |
|                    | 2.40 mm  | Green  |
|                    | 2.60 mm  | Lilac  |
| Cucumber           | 2.80 mm  | Clear  |
|                    | 3.00 mm  | Red    |



## GEM EXTRACTOR FORCEPS

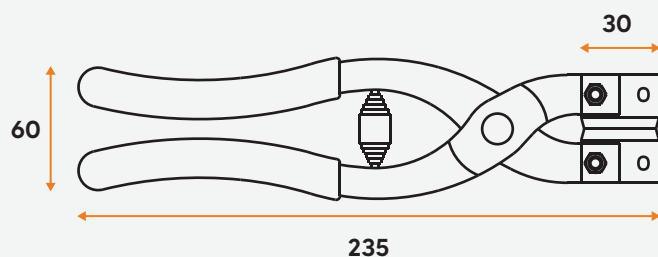
Indicated for the extraction of sugarcane buds, for the production of pre-sprouted seedlings (MPB)



### CHARACTERISTICS

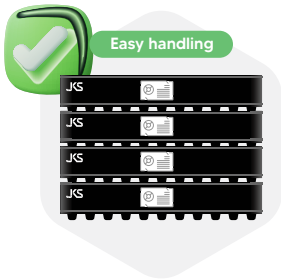
- Made os SAE 1020 carbon steel;
- Galvanized finish;
- PVC coated legs for better grip;
- Safety lock and return spring;
- Composed of two nitrated stainless steel sheets, produced on CNC machines for the precise cutting of the gem;
- The seats are interchangeable and allow you to change the cutting side, more durability and time of use.

| MEASURES                    | DATA             |
|-----------------------------|------------------|
| Dimensions mm (C x L x A)   | 235 x 60 x 35 mm |
| Weight (kg)                 | 0,44 kg          |
| Cutting blade diameter (mm) | 30 mm            |



Why use

# JKS PLASTIC TRAYS?



**JKS PLASTIC TRAY**



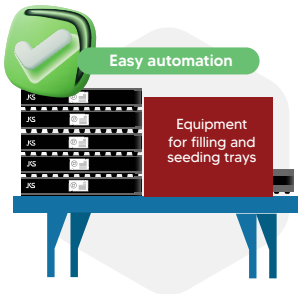
DISPOSABLE TRAY



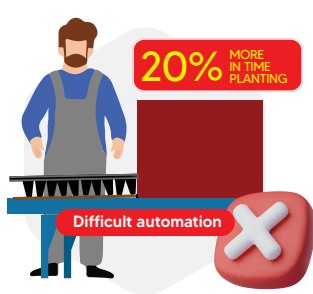
**JKS PLASTIC TRAY**



DISPOSABLE TRAY



**JKS PLASTIC TRAY**



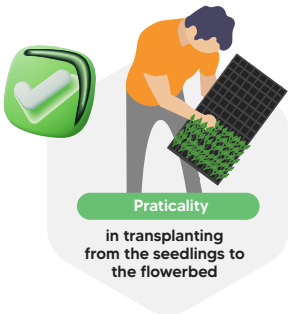
DISPOSABLE TRAY



**JKS PLASTIC TRAY**



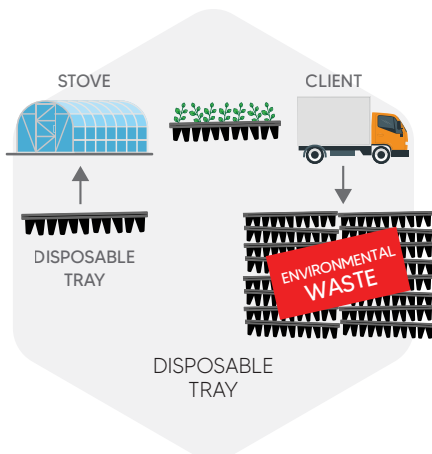
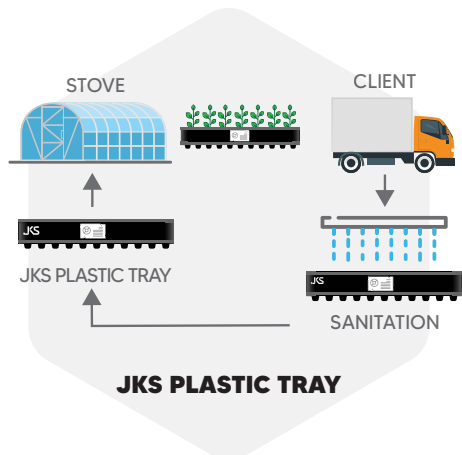
DISPOSABLE TRAY



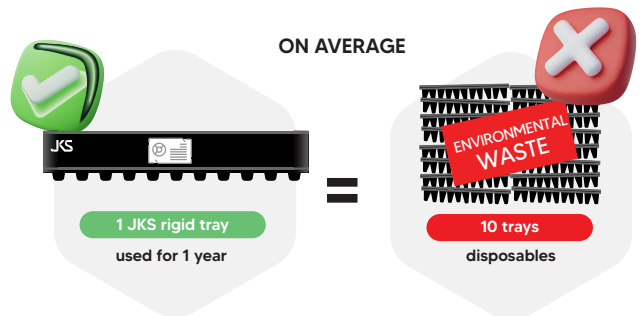
**JKS PLASTIC TRAY**



DISPOSABLE TRAY



DISPOSABLE TRAY



**JKS PLASTIC TRAY**

DISPOSABLE TRAY



Why use

# JKS PLASTIC TRAYS?

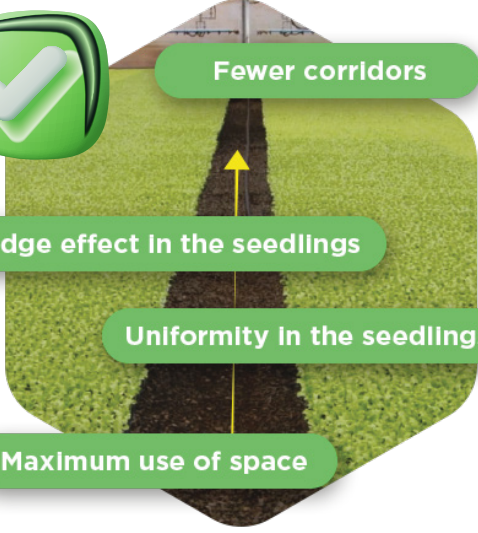


Fewer corridors

Less edge effect in the seedlings

Uniformity in the seedlings

Maximum use of space



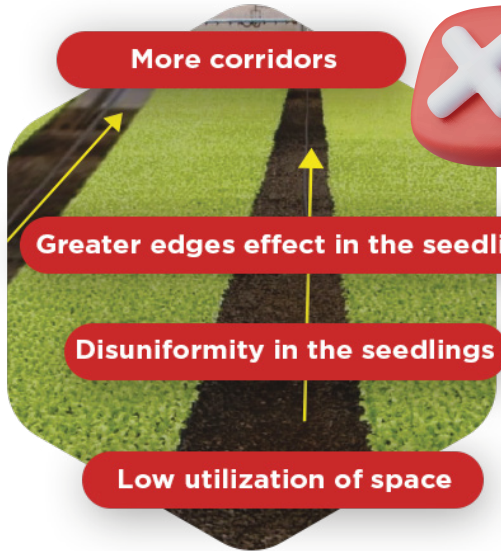
More corridors



Greater edges effect in the seedlings

Disuniformity in the seedlings

Low utilization of space



**JKS TRAY**

DISPOSABLE TRAY

Fewer people managing the nursery



**JKS TRAY**

30% more people managing the nursery



DISPOSABLE TRAY



 Bring savings to your nursery

 Increasing the productivity of your nursery

 Do not harm the environment

 All this using JKS rigid trays

jks@jks.com.br | jksagro.com.br

+ 55 11 2453-8100 0800-11-3009

Av. Faustino Ramalho, 831 Vila Galvão Guarulhos SP 07054-040

